

Public Official Eligibility


PERA prohibits recording and distribution of this presentation.





TODAY'S
AGENDA

Agenda

- Public Official Positions
 - What is the DCP?
 - Plan Eligibility
 - Enrollment Guidelines
 - Membership Election Form
 - Resources
- 



Public Official Positions



How to Categorize Public Official Positions

1. Governing or non-governing?
2. Elected or appointed?



Governing or Non-Governing?

Does the public official have a vote on the governing body?

Yes - Governing body

No - Non-governing body



Elected or appointed?

Is the position at your unit ***usually*** elected by the public at large?

Yes - Elected

No - Appointed



Public Official Categories for DCP Eligibility

1. Elected governing
2. Appointed governing
3. Elected non-governing
4. Appointed non-governing



Elected Governing

1. Elected by the public at large
(or appointed to finish term)
2. Primary policy makers

Examples:

- City council
- County commissioners
- Township supervisors
- School board
- Special district boards



Appointed Governing

1. Not elected by the general public
2. Have a vote within the board or commission

Examples:

- Joint powers board
- Planning commission
- Parks board



Elected Non-Governing

1. Elected by the public at large (or appointed to finish term)
2. Do not have a vote

Examples:

- County auditor, treasurer, recorder, attorney, or coroner
- City or township clerk
- City or township treasurer



Appointed Non-Governing

1. Not elected by the general public
2. Always appointed within the governmental subdivision
3. Do not have a vote

Examples:

- County auditor, recorder, attorney, or coroner
- City, township, or county treasurer
- City or township clerk



Employees who are Not Public Officials:

1. Positions that do not have a vote
2. Never elected across the state of Minnesota
3. Always appointed at the governmental subdivision level across the state of Minnesota

Examples:

- Deputy clerk
- Deputy treasurer
- Other hired positions

These individuals are not eligible for the DCP





What is the DCP?



Defined Contribution Plan (DCP) for Public Officials

- 401(a) tax-qualified retirement plan
- Both the public official and the employer contribute 5% of each paycheck
- Contributions are invested and grow tax-deferred until retirement



Defined Contribution Plan (DCP) for Public Officials

- Participation is generally optional
- No salary requirement
- Contributions go towards purchasing shares
- Lump-sum payout—no monthly benefits



DCP vs. Coordinated Plan

Public Employees DCP

- Payment based on amount of contributions and investment performance
- Member makes investment decisions
- One-time lump sum

Coordinated Plan

- Payment based on average salary, years of service, and age at retirement
- SBI manages investments on member's behalf
- Lifetime monthly benefit





Public Official Plan Eligibility



Optional or Required PERA Participation for Public Officials?

Participation is **optional** :

- If it is the public official's first PERA eligibility with that unit, and
- It is within their first 30 days of work as a public official

Participation is **mandatory**:

- If the public official previously had PERA coverage with the same employer that they are now a public official for



First PERA Eligibility with the Employer

Option of DCP or no PERA

- All governing body officials
- All elected non-governing body officials
- Appointed non-governing body officials who **do not exceed** \$425

Coordinated Plan eligibility

If monthly salary **exceeds** \$425:

- Optional for elected non-governing body officials
- Mandatory for appointed non-governing body officials



First PERA Eligibility with the Employer

Position	Monthly Salary	DCP	Coordinated	No PERA
Governing Body	Any	Optional		Default
Elected Non-Governing	\$425 or less	Optional		Default
	Over \$425	Optional	Optional	Default
Appointed Non-Governing	\$425 or less	Optional		Default
	Over \$425		REQUIRED	



Previous PERA Coverage with the Same Employer

DCP is mandatory for:

- All governing body officials
- Elected non-governing body officials who **do not exceed** \$425
- Appointed Non-governing body officials who **do not exceed** \$425
 - However, if monthly pay ever **exceeds** \$425 → mandatory Coordinated coverage



Previous PERA Coverage with the Same Employer

DCP or Coordinated Plan is mandatory for:

- Elected non-governing body officials if monthly salary **exceeds** \$425

Coordinated Plan is mandatory for:

- Appointed non-governing body officials when monthly salary **exceeds** \$425



Previous PERA Coverage with the Same Employer

Position	Monthly Salary	DCP	Coordinated
Governing Body	Any	REQUIRED	
Elected Non-Governing	\$425 or less	REQUIRED	
	Over \$425	Default	Optional
Appointed Non-Governing	\$425 or less	REQUIRED	
	Over \$425		REQUIRED

Two DCP Enrollment Categories:

DCP Elected Officials

- This plan is for all governing body official and all elected non-governing body officials
- There are no salary restrictions and PERA does not monitor salary

DCP Appointed Non-Governing

- Officials whose monthly pay **does not exceed** \$425 must join this plan
- If their monthly earnings **exceed** \$425, their DCP participation ends and Coordinated must begin
- Employers and PERA must monitor earnings



DCP Enrollment Categories for Public Official Positions

Position	Monthly Salary	Enrollment Category	SDR Plan ID
Governing Body	Any	DCP Elected Officials	16
Elected Non-Governing	Any	DCP Elected Officials	16
Appointed Non-Governing	\$425 or less	DCP Appointed Non-Gov	27

ENROLL



Enrollment Guidelines



Public officials with optional PERA must make an election within 30 days of their first day of work

- Election is made on the *Membership Election by Public Officials* form
- Making no election results in an automatic opt-out
- Election is permanent with that same employer



Employer Responsibilities

Inform public officials when eligible for optional PERA by providing:

- ✓ Public Employees DCP Handbook (and Coordinated Plan Handbook when applicable)
- ✓ *Membership Election for Public Officials* form with part A completed
 - Inform part B must be signed within **30 days** of their first day of work
 - Ensure the form is received by PERA within **60 days** of their first day of work



Page 1

- Employer Instructions
- Individual Instructions
- Public Official Positions
- PERA Membership Options

MEMBERSHIP ELECTION FORM FOR PUBLIC OFFICIALS

Public officials can make a one-time, permanent decision to participate in PERA if they are within their first 30 days of PERA-eligible work with a governmental subdivision.

EMPLOYER INSTRUCTIONS

PERA must receive completed forms within 60 days of the public official's first day of work.

1. **Complete part A in blue or black ink.** Incomplete forms will result in a delay or cancellation of your request.
2. **Instruct individual to complete part B.** They must sign the form within their first 30 days of work.
3. **Submit the form to PERA.** Return the form even if no coverage is selected and retain a copy for your records.
 - » Use the secure document upload feature in ERIS, or
 - » Fax or mail the completed form to PERA.

Notice: Do not withhold contributions until the official has made a written selection to participate. Submitted contributions are refunded if an election form was:

- » Not signed within 30 days of their first day of work in a DCP-eligible position with the governmental subdivision and/or,
- » Not received by PERA within 60 days of their first day of work in the position.

INDIVIDUAL INSTRUCTIONS

You must sign this form within the first 30 days of your work as a public official with this governmental subdivision. If you do not make a membership selection, you will have no PERA coverage.

1. **Complete part B in blue or black ink.** Incomplete forms will result in a delay or cancellation of your request.
2. **Return the form to your employer.** PERA must receive your completed form within your first 60 days of work in this position.

PUBLIC OFFICIAL POSITIONS

A. Elected non-governing body local public official or appointed to fill the unfinished term of an elected position.
Example: county auditor or attorney, city or township clerk, treasurer

B. Elected governing body local public official or appointed to fill the unfinished term of an elected position.
Example: county commissioner, city council member, school board member, township supervisor, soil & water board

C. Appointed (hired) non-governing body public official whose salary does not exceed \$425 in any month.
Example: township and city clerk or treasurer positions that are always appointed; county auditor, treasurer, or recorder

D. Appointed governing body public official on a board or commission of this governmental subdivision.

E. Elected county sheriff who is currently receiving retirement benefits from the PERA Police & Fire Plan and who was not previously employed by the county.

PERA MEMBERSHIP OPTIONS


Defined Contribution Plan (DCP): Public officials can choose to participate in the DCP. DCP coverage starts the day PERA receives this form or the first day DCP contributions are taken from the public official's salary. With some exceptions, DCP membership may prevent withholding Social Security contributions from public official earnings. Public officials younger than age 65 who enrolled in the DCP can receive a full or partial distribution of their account balance when they terminate all public service.

Coordinated Plan: Elected non-governing body local public officials (position A above) who earn more than \$425 in a month can participate in the Coordinated Plan. Coordinated Plan coverage starts the day PERA receives this form or the first day Coordinated Plan contributions are taken from the public official's salary. Social Security taxes are also withheld.

No PERA Coverage: Public officials who do not have previous PERA coverage with the governmental subdivision can choose not to participate in PERA. The choice not to participate in optional PERA membership is permanent for all future and current service with this governmental subdivision. Social Security taxes are withheld for all public officials not participating in PERA except elected sheriffs who are retired members of the Police & Fire Plan. If public officials have any prior PERA membership with the governmental subdivision, PERA participation is mandatory for their public official earnings.

Page 2

- Employer Completes part A
- Individual Completes part B

 PERA
 MEMBERSHIP ELECTION FORM
FOR PUBLIC OFFICIALS

Please read the instructions listed on page 1 before completing this form. Public officials must sign the form within the first 30 days of PERA-eligible work with this governmental subdivision and PERA must receive completed forms within their first 60 days of work in this position.

PART A—FOR COMPLETION BY EMPLOYER

NAME OF GOVERNMENTAL SUBDIVISION Hotdish County		PERA EMPLOYER NUMBER 1234-56	
PUBLIC OFFICIAL LAST NAME Tot	PUBLIC OFFICIAL FIRST NAME & MIDDLE INITIAL Tator	GENDER <input type="checkbox"/> Male <input checked="" type="checkbox"/> Female	
ADDRESS—STREET 123 Cream of Mushroom Lane	CITY Ground Beef	STATE MN	ZIP CODE 54321
SOCIAL SECURITY NUMBER 123-45-6789	POSITION TITLE County Recorder	DATE OF BIRTH—MM/DD/YYYY 07/15/1982	
FIRST DAY OF WORK—MM/DD/YYYY 04/21/2026	PAY CYCLE FOR THIS POSITION <input checked="" type="checkbox"/> Biweekly <input type="checkbox"/> Monthly <input type="checkbox"/> Quarterly <input type="checkbox"/> Other _____		
PUBLIC OFFICIAL CLASSIFICATION <input type="checkbox"/> Elected <input checked="" type="checkbox"/> Appointed/Hired <input type="checkbox"/> Appointed to an Elected Position's Vacancy			

Check the box that describes the basis for the public official's eligibility for optional PERA membership with this governmental entity:

☐ A. Elected non-governing body local public official or appointed to fill the unfinished term of an elected position.

☐ B. Elected governing body local public official or appointed to fill the unfinished term of an elected position.

☒ C. Appointed (hired) non-governing body public official whose salary does not exceed \$425 in any month.

Notice for appointed (hired) non-governing positions: If, at any time, the public official's earnings exceed the minimum salary threshold set by Minn. Stat. § 353.01 subd. 2a(a), DCP participation must stop and they must immediately be enrolled into PERA's Coordinated Plan until termination of employment. At that time, Social Security taxes will be withheld from their earnings in addition to the deductions taken for coverage of the Coordinated retirement plan.

☐ D. Appointed governing body public official on a board or commission of this governmental subdivision.

☐ E. Elected county sheriff who is currently receiving retirement benefits from the PERA Police & Fire Plan and who was not previously employed by the county.

SIGNATURE OF EMPLOYER REPRESENTATIVE	POSITION	DATE	DAYTIME TELEPHONE NUMBER
--------------------------------------	----------	------	--------------------------

PART B—FOR COMPLETION BY PUBLIC OFFICIAL

I make the following permanent choice with respect to membership with PERA:

☐ **Defined Contribution Plan (DCP)***

☐ **Coordinated Plan** (available only to position A, when monthly earnings exceed \$425)*

☐ **No PERA Coverage**

*PERA membership may, depending upon income, lower or eliminate the tax deductibility of contributions to an IRA.

INITIALS	I certify that I do not have prior service eligible for optional PERA membership with this governmental subdivision. I understand my selection is permanent for current and successive terms in office within this entity.
SIGNATURE OF PUBLIC OFFICIAL	DATE


60 EMPIRE DRIVE, SUITE 200, ST. PAUL, MN 55103-2088
FORM ET1001 | MAY 2025

1.888.892.7372 | 651.296.3636 | Fax: 651.296.2493 | mpera.org

1 of 1

Step 1: complete part A

- Use blue or black ink
- Save a copy for your records
- Do not withhold contributions until/unless:
 - ✓ The public official signs the form, and
 - ✓ Coverage was selected



MEMBERSHIP ELECTION FORM
 FOR PUBLIC OFFICIALS

Please read the instructions listed on page 1 before completing this form. Public officials must sign the form within the first 30 days of PERA-eligible work with this governmental subdivision and PERA must receive completed forms within their first 60 days of work in this position.

PART A—FOR COMPLETION BY EMPLOYER

NAME OF GOVERNMENTAL SUBDIVISION Hotdish County		PERA EMPLOYER NUMBER 1234-56	
PUBLIC OFFICIAL LAST NAME Tot	PUBLIC OFFICIAL FIRST NAME & MIDDLE INITIAL Tator		GENDER <input type="checkbox"/> Male <input checked="" type="checkbox"/> Female
ADDRESS—STREET 123 Cream of Mushroom Lane		CITY Ground Beef	STATE MN
SOCIAL SECURITY NUMBER 123-45-6789		POSITION TITLE County Recorder	ZIP CODE 54321
FIRST DAY OF WORK—MM/DD/YYYY 04/21/2026	PAY CYCLE FOR THIS POSITION <input checked="" type="checkbox"/> Biweekly <input type="checkbox"/> Monthly <input type="checkbox"/> Quarterly <input type="checkbox"/> Other _____		
DATE OF BIRTH—MM/DD/YYYY 07/15/1982			
PUBLIC OFFICIAL CLASSIFICATION <input type="checkbox"/> Elected <input checked="" type="checkbox"/> Appointed/Hired <input type="checkbox"/> Appointed to an Elected Position's Vacancy			

Check the box that describes the basis for the public official's eligibility for optional PERA membership with this governmental entity:

☐ A. Elected non-governing body local public official or appointed to fill the unfinished term of an elected position.

☐ B. Elected governing body local public official or appointed to fill the unfinished term of an elected position.

☒ C. Appointed (hired) non-governing body public official whose salary does not exceed \$425 in any month.

Notice for appointed (hired) non-governing positions: If, at any time, the public official's earnings exceed the minimum salary threshold set by Minn. Stat. § 353.01 subd. 2a(a), DCP participation must stop and they must immediately be enrolled into PERA's Coordinated Plan until termination of employment. At that time, Social Security taxes will be withheld from their earnings in addition to the deductions taken for coverage of the Coordinated retirement plan.

☐ D. Appointed governing body public official on a board or commission of this governmental subdivision.

☐ E. Elected county sheriff who is currently receiving retirement benefits from the PERA Police & Fire Plan and who was not previously employed by the county.

SIGNATURE OF EMPLOYER REPRESENTATIVE	POSITION	DATE	DAYTIME TELEPHONE NUMBER

PART B—FOR COMPLETION BY PUBLIC OFFICIAL

I make the following permanent choice with respect to membership with PERA:

☐ **Defined Contribution Plan (DCP)***

☐ **Coordinated Plan** (available only to position A, when monthly earnings exceed \$425)*

☐ **No PERA Coverage**

*PERA membership may, depending upon income, lower or eliminate the tax deductibility of contributions to an IRA.

INITIALS	I certify that I do not have prior service eligible for optional PERA membership with this governmental subdivision. I understand my selection is permanent for current and successive terms in office within this entity.
SIGNATURE OF PUBLIC OFFICIAL	DATE

60 EMPIRE DRIVE, SUITE 200, ST. PAUL, MN 55103-2088
FORM ET1001 | MAY 2025

1.888.892.7372 | 651.296.3636 | Fax: 651.296.2493 | mnpera.org
1 of 1

Step 2: instruct public official to complete part B

- Must sign within **30 days** of their first day of work
- If PERA coverage was selected, begin contributions immediately
- Making no selection results in an automatic opt-out
- Either election is permanent with the same employer

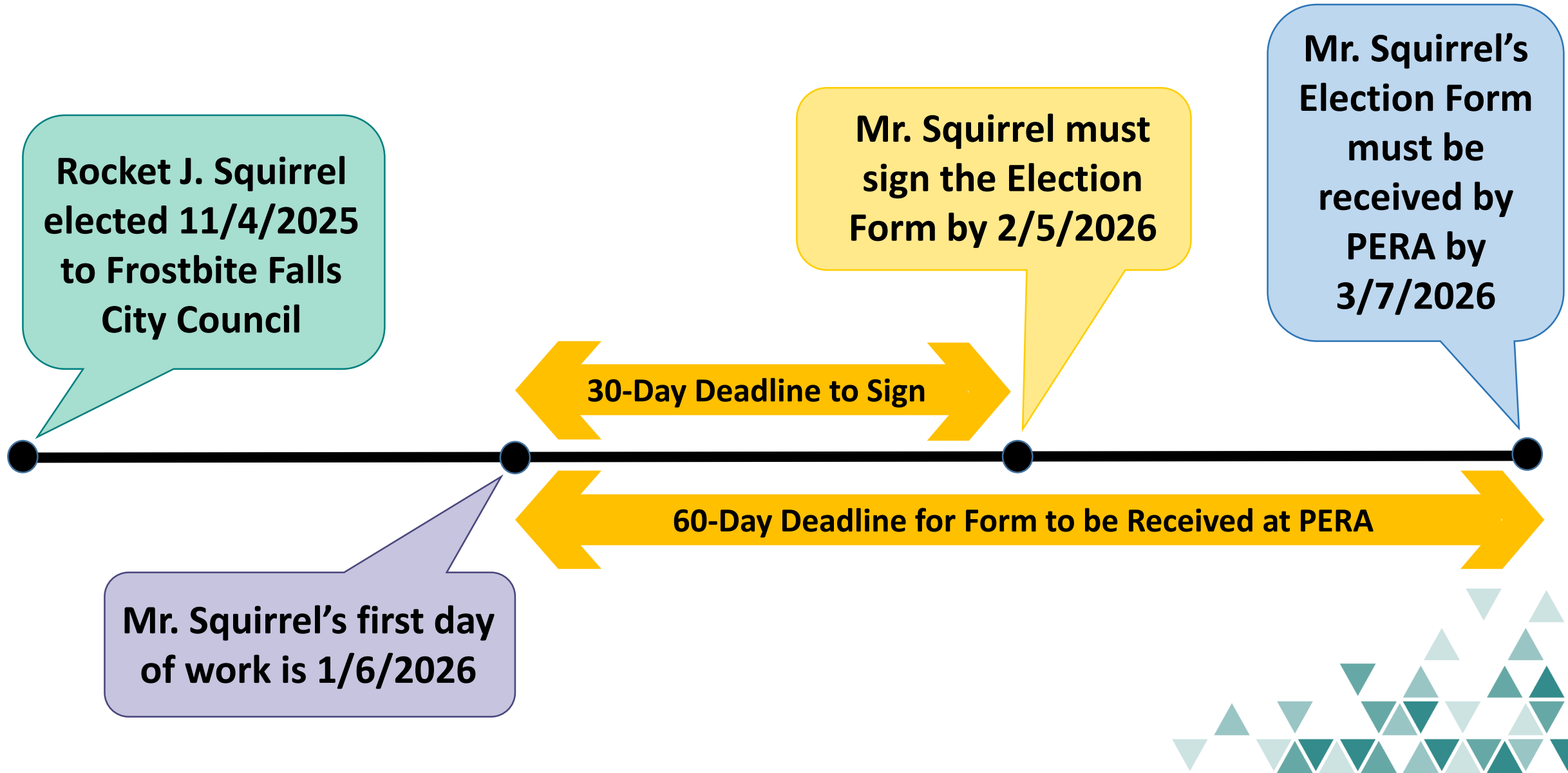


Step 3: submit the form to PERA

- PERA must *receive* the form within **60 days** of the first day of work
- Return the form no matter what—even if:
 - No PERA coverage was selected, or
 - The public official did not sign the form
- Election is permanent with the same employer



Timeline





Membership Election Form



New City Council Member

PART A—FOR COMPLETION BY EMPLOYER

NAME OF GOVERNMENTAL SUBDIVISION City of Frostbite Falls		PERA EMPLOYER NUMBER 1234-56	
PUBLIC OFFICIAL LAST NAME Squirrel	PUBLIC OFFICIAL FIRST NAME & MIDDLE INITIAL Rocket J.		GENDER <input checked="" type="checkbox"/> Male <input type="checkbox"/> Female <input type="checkbox"/> _____
ADDRESS—STREET 123 Cartoon Road		CITY Frostbite Falls	STATE MN
ZIP CODE 54321			
SOCIAL SECURITY NUMBER 123-45-6789	POSITION TITLE City Council		DATE OF BIRTH—MM/DD/YYYY 11/19/1959
FIRST DAY OF WORK—MM/DD/YYYY 01/06/2026	PAY CYCLE FOR THIS POSITION <input checked="" type="checkbox"/> Biweekly <input type="checkbox"/> Monthly <input type="checkbox"/> Quarterly <input type="checkbox"/> Other _____		
PUBLIC OFFICIAL CLASSIFICATION <input checked="" type="checkbox"/> Elected <input type="checkbox"/> Appointed/Hired <input type="checkbox"/> Appointed to an Elected Position's Vacancy			

New City Council Member

Check the box that describes the basis for the public official's eligibility for optional PERA membership with this governmental entity:

☐ A. Elected non-governing body local public official or appointed to fill the unfinished term of an elected position.

☒ B. Elected governing body local public official or appointed to fill the unfinished term of an elected position.

☐ C. Appointed (hired) non-governing body public official whose salary does not exceed \$425 in any month.

Notice for appointed (hired) non-governing positions: If, at any time, the public official's earnings exceed the minimum salary threshold set by Minn. Stat. § 353.01 subd, 2a(a), DCP participation must stop and they must immediately be enrolled into PERA's Coordinated Plan until termination of employment. At that time, Social Security taxes will be withheld from their earnings in addition to the deductions taken for coverage of the Coordinated retirement plan.

☐ D. Appointed governing body public official on a board or commission of this governmental subdivision.

☐ E. Elected county sheriff who is currently receiving retirement benefits from the PERA Police & Fire Plan and who was not previously employed by the county.

SIGNATURE OF EMPLOYER REPRESENTATIVE	POSITION	DATE	DAYTIME TELEPHONE NUMBER

Mr. Squirrel has the option of:

- PERA's DCP; or
- No PERA coverage

PART B—FOR COMPLETION BY PUBLIC OFFICIAL

I make the following permanent choice with respect to membership with PERA:

- ☒ **Defined Contribution Plan (DCP)***
- ☐ **Coordinated Plan** (available only to position A, when monthly earnings exceed \$425)*
- ☒ **No PERA Coverage**

*PERA membership may, depending upon income, lower or eliminate the tax deductibility of contributions to an IRA.

INITIALS	I certify that I do not have prior service eligible for optional PERA membership with this governmental subdivision. I understand my selection is permanent for current and successive terms in office within this entity.	
SIGNATURE OF PUBLIC OFFICIAL		DATE

New Township Clerk

Township Clerk

PART A—FOR COMPLETION BY EMPLOYER				
NAME OF GOVERNMENTAL SUBDIVISION Blue Ox Township			PERA EMPLOYER NUMBER 1234-56	
PUBLIC OFFICIAL LAST NAME Bunyan		PUBLIC OFFICIAL FIRST NAME & MIDDLE INITIAL Paul		GENDER <input checked="" type="checkbox"/> Male <input type="checkbox"/> Female <input type="checkbox"/> _____
ADDRESS—STREET 123 Northwoods Street		CITY Blue Ox	STATE MN	ZIP CODE 54321
SOCIAL SECURITY NUMBER 123-45-6789	POSITION TITLE Township Clerk		DATE OF BIRTH—MM/DD/YYYY 01/12/1994	
FIRST DAY OF WORK—MM/DD/YYYY 07/11/2026	PAY CYCLE FOR THIS POSITION <input type="checkbox"/> Biweekly <input checked="" type="checkbox"/> Monthly <input type="checkbox"/> Quarterly <input type="checkbox"/> Other _____			
PUBLIC OFFICIAL CLASSIFICATION <input type="checkbox"/> Elected <input type="checkbox"/> Appointed/Hired <input checked="" type="checkbox"/> Appointed to an Elected Position's Vacancy				

New Township Clerk

Check the box that describes the basis for the public official's eligibility for optional PERA membership with this governmental entity:

☒ **A. Elected non-governing body local public official or appointed to fill the unfinished term of an elected position.**

☐ **B. Elected governing body local public official or appointed to fill the unfinished term of an elected position.**

☐ **C. Appointed (hired) non-governing body public official whose salary does not exceed \$425 in any month.**

Notice for appointed (hired) non-governing positions: If, at any time, the public official's earnings exceed the minimum salary threshold set by Minn. Stat. § 353.01 subd, 2a(a), DCP participation must stop and they must immediately be enrolled into PERA's Coordinated Plan until termination of employment. At that time, Social Security taxes will be withheld from their earnings in addition to the deductions taken for coverage of the Coordinated retirement plan.

☐ **D. Appointed governing body public official on a board or commission of this governmental subdivision.**

☐ **E. Elected county sheriff who is currently receiving retirement benefits from the PERA Police & Fire Plan and who was not previously employed by the county.**

SIGNATURE OF EMPLOYER REPRESENTATIVE

POSITION

DATE

DAYTIME TELEPHONE NUMBER

Mr. Bunyan has the option of:

- PERA's DCP;
- The Coordinated Plan (if monthly salary exceeds \$425); or
- No PERA coverage

PART B—FOR COMPLETION BY PUBLIC OFFICIAL

I make the following permanent choice with respect to membership with PERA:

- ☒ **Defined Contribution Plan (DCP)***
- ☒ **Coordinated Plan** (available only to position A, when monthly earnings exceed \$425)*
- ☒ **No PERA Coverage**

*PERA membership may, depending upon income, lower or eliminate the tax deductibility of contributions to an IRA.

INITIALS	I certify that I do not have prior service eligible for optional PERA membership with this governmental subdivision. I understand my selection is permanent for current and successive terms in office within this entity.	
SIGNATURE OF PUBLIC OFFICIAL		DATE

New County Recorder

PART A—FOR COMPLETION BY EMPLOYER

NAME OF GOVERNMENTAL SUBDIVISION Hotdish County		PERA EMPLOYER NUMBER 1234-56	
PUBLIC OFFICIAL LAST NAME Tot	PUBLIC OFFICIAL FIRST NAME & MIDDLE INITIAL Tator		GENDER <input type="checkbox"/> Male <input checked="" type="checkbox"/> Female <input type="checkbox"/> _____
ADDRESS—STREET 123 Cream of Mushroom Lane		CITY Ground Beef	STATE MN
ZIP CODE 54321			
SOCIAL SECURITY NUMBER 123-45-6789	POSITION TITLE County Recorder		DATE OF BIRTH—MM/DD/YYYY 07/15/1982
FIRST DAY OF WORK—MM/DD/YYYY 04/21/2026	PAY CYCLE FOR THIS POSITION <input checked="" type="checkbox"/> Biweekly <input type="checkbox"/> Monthly <input type="checkbox"/> Quarterly <input type="checkbox"/> Other _____		
PUBLIC OFFICIAL CLASSIFICATION <input type="checkbox"/> Elected <input checked="" type="checkbox"/> Appointed/Hired <input type="checkbox"/> Appointed to an Elected Position's Vacancy			

New County Recorder

Check the box that describes the basis for the public official's eligibility for optional PERA membership with this governmental entity:

- ☐ A. Elected non-governing body local public official or appointed to fill the unfinished term of an elected position.
- ☐ B. Elected governing body local public official or appointed to fill the unfinished term of an elected position.
- ☒ C. Appointed (hired) non-governing body public official whose salary does not exceed \$425 in any month.

Notice for appointed (hired) non-governing positions: If, at any time, the public official's earnings exceed the minimum salary threshold set by Minn. Stat. § 353.01 subd, 2a(a), DCP participation must stop and they must immediately be enrolled into PERA's Coordinated Plan until termination of employment. At that time, Social Security taxes will be withheld from their earnings in addition to the deductions taken for coverage of the Coordinated retirement plan.

- ☐ D. Appointed governing body public official on a board or commission of this governmental subdivision.
- ☐ E. Elected county sheriff who is currently receiving retirement benefits from the PERA Police & Fire Plan and who was not previously employed by the county.

If earnings remain below \$425, Ms. Tot has the option of:

- PERA's DCP; or
- No PERA coverage

However, if monthly pay ever exceeds \$425, DCP participation must end and Coordinated Plan must begin.

PART B—FOR COMPLETION BY PUBLIC OFFICIAL

I make the following permanent choice with respect to membership with PERA:

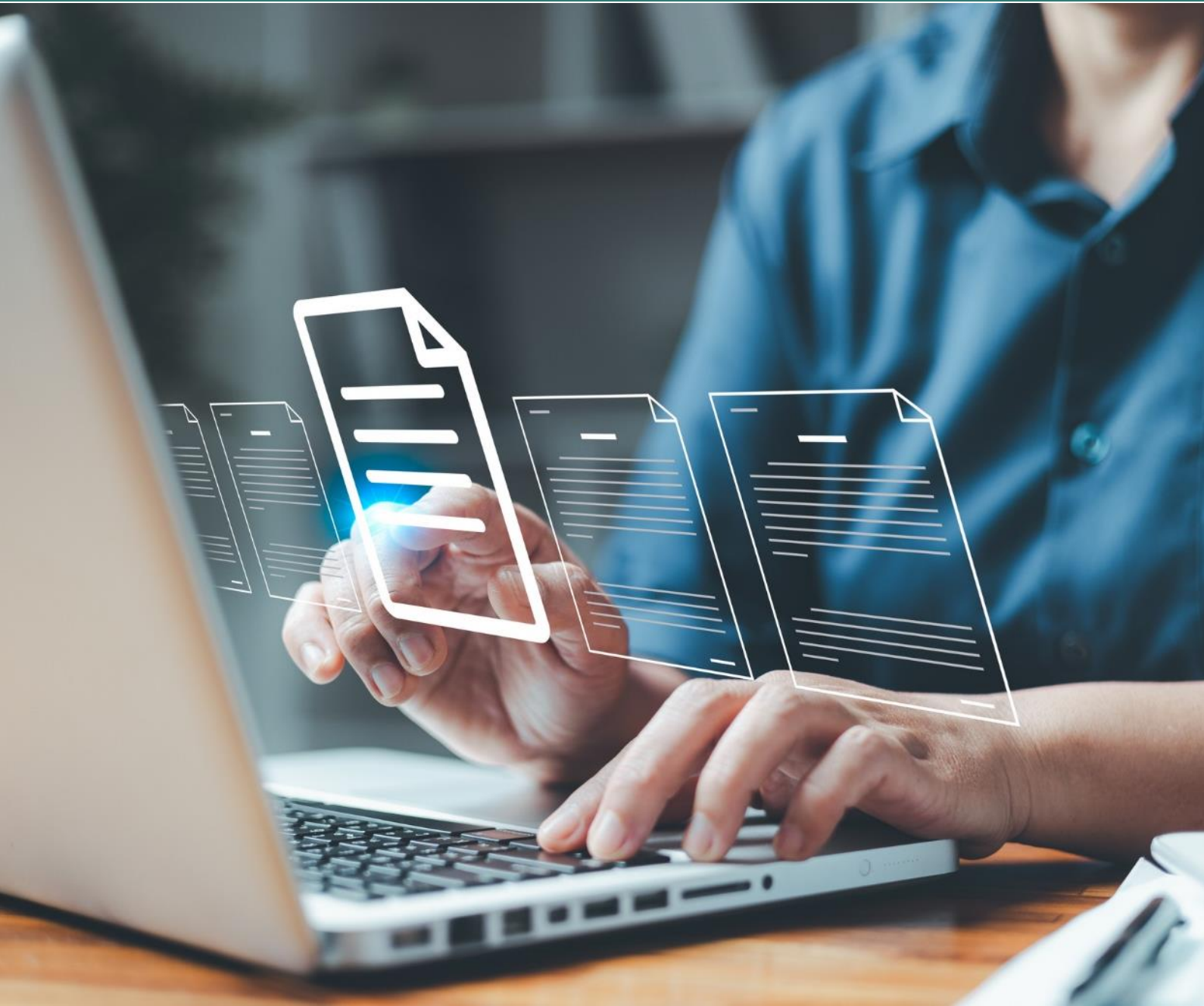
- ☒ **Defined Contribution Plan (DCP)***
- ☐ **Coordinated Plan** (available only to position A, when monthly earnings exceed \$425)*
- ☒ **No PERA Coverage**

*PERA membership may, depending upon income, lower or eliminate the tax deductibility of contributions to an IRA.

INITIALS	I certify that I do not have prior service eligible for optional PERA membership with this governmental subdivision. I understand my selection is permanent for current and successive terms in office within this entity.	
SIGNATURE OF PUBLIC OFFICIAL		DATE

Previous Coverage with the Same Employer: Plan Requirements or Options

Position	Monthly Salary	DCP	Coordinated
Governing Body	Any	REQUIRED	
Elected Non-Governing	\$425 or less	REQUIRED	
	Over \$425	Default	Optional
Appointed Non-Governing	\$425 or less	REQUIRED	
	Over \$425		REQUIRED



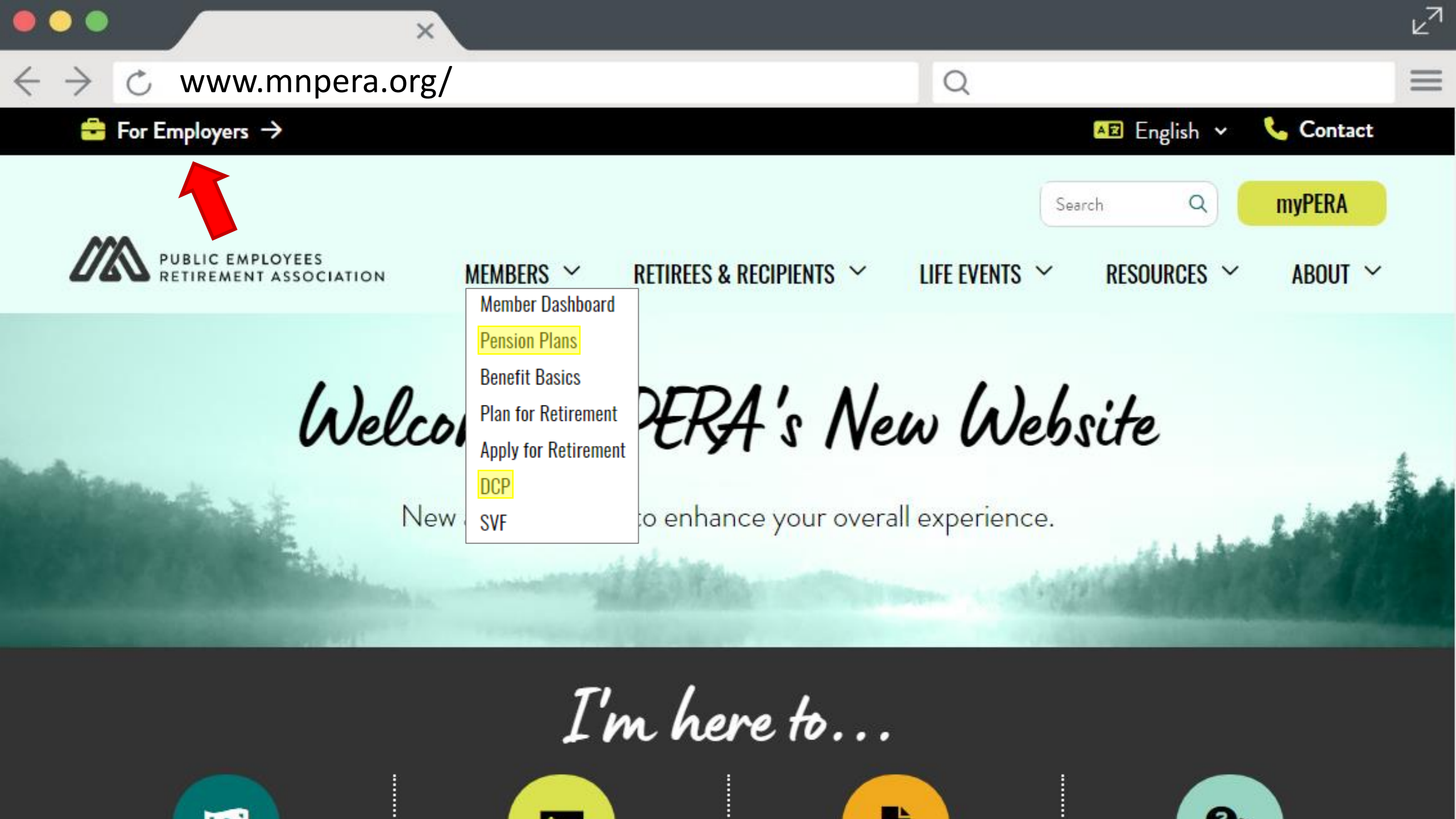
Resources



Resources


- Employer Manual
 - Chapter 3: Defined Benefit Plans
 - Chapter 4: Defined Contribution Plan
- Membership Eligibility
 - On-demand webinar
 - Overview document
- Plan Handbooks
 - Coordinated Plan
 - Defined Contribution Plan





www.mnpera.org/

 For Employers →

 English ▾

 Contact



PUBLIC EMPLOYEES
RETIREMENT ASSOCIATION

MEMBERS ▾

RETIREES & RECIPIENTS ▾

LIFE EVENTS ▾

RESOURCES ▾

ABOUT ▾

Member Dashboard

Pension Plans

Benefit Basics

Plan for Retirement

Apply for Retirement

DCP

SVF

Search

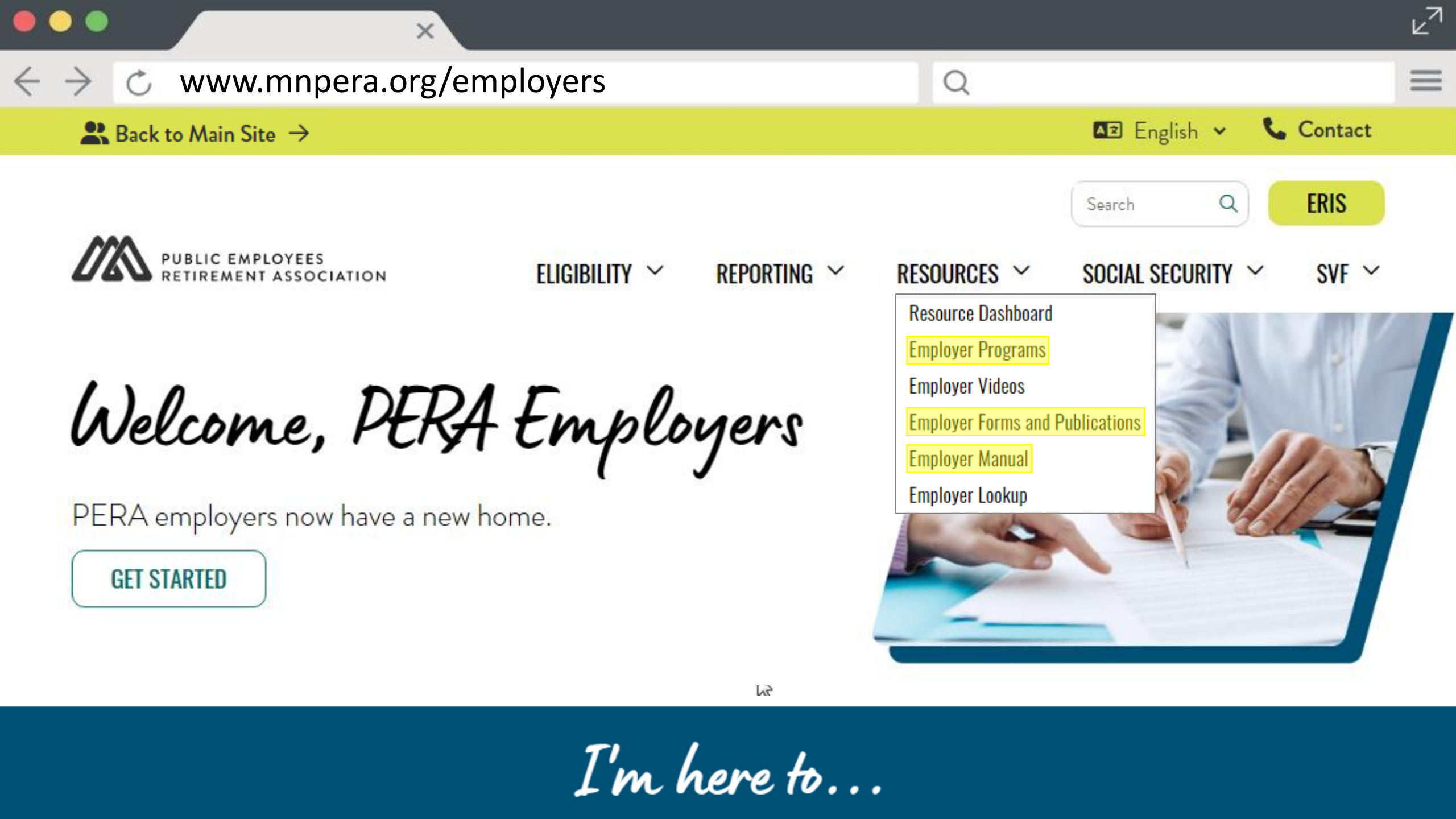


myPERA

Welcome to PERA's New Website

New... to enhance your overall experience.

I'm here to...



PUBLIC EMPLOYEES
RETIREMENT ASSOCIATION

ELIGIBILITY ▾

REPORTING ▾

RESOURCES ▾

SOCIAL SECURITY ▾

SVF ▾

Welcome, PERA Employers

PERA employers now have a new home.

GET STARTED

Resource Dashboard

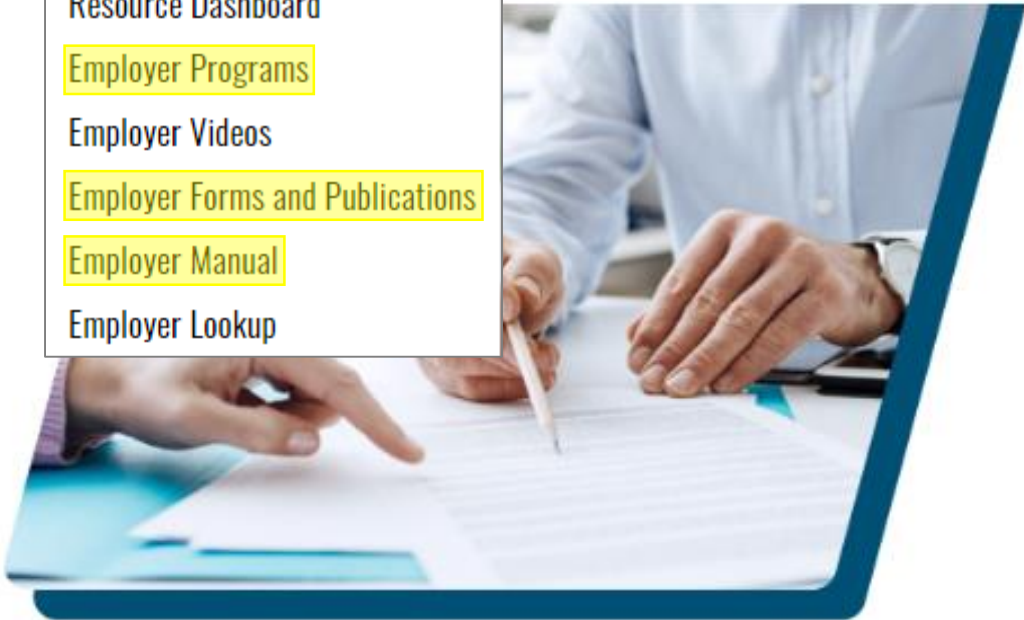
Employer Programs

Employer Videos

Employer Forms and Publications

Employer Manual

Employer Lookup



I'm here to...

- PERA eligibility for public officials depends on various factors
- The Public Employees DCP is **not** a pension plan; benefit is paid out as a one-time lump-sum
- PERA Participation is optional for most public officials, mandatory for others—refer to charts in overview
- Inform public officials of their PERA eligibility within required timelines (first 30 days)





PERA is governed by Minnesota Statutes; especially chapters 11A, 353, 353A, 353D, 353E, 353F, 353G, 356 and 356A.

Changes to PERA's plans, including benefit provisions and contribution rates, are made through the introduction and passage of legislation by the Minnesota Legislature.



Disclaimer:

Our programs are intended to provide general information; the rights and obligations of PERA members are governed by state and federal laws, rules, and regulations. The Minnesota Legislature or the federal government may change the statutes, rules, and regulations governing PERA at any time. If there is a discrepancy between the law governing PERA and the information contained in this presentation, the statutes and regulations will govern.



Wrap-up and Questions

Contact Us

www.mnpera.org/employers

651.296.3636

1.888.892.7372

Enrollment and Form Questions:

Email: ERISresponses@mnpera.org

Web Message Topic: Enrollments

Phone option: 4

Eligibility Questions:

Email: eligibility@mnpera.org

Web Message Topic: Eligibility

Phone option: 3

